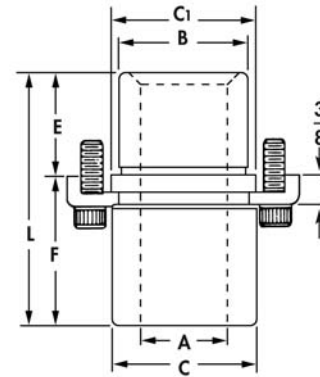


SinterLube® Bushings for Dies - INCH (-335, -345, -385)

- Ideal for retro-fits to improve productivity and decrease costly maintenance.
- Proven quality and dependability in dies for years.
- Readily available.
- Oversize press fit end for die shoe and nominal size end for bushing.
- Interchangeable with familiar brands.



Short Shoulder Bushings



Inside Diameter A		B		C1	E	F	L	SinterLube® Catalog Number
Nom.	Dec.		C					
3/4"	0.750	1 1/8	1.17	1.26	11/16	3/4	1 7/16	6-06-335
1"	1.000	1 1/2	1.72	1.84	15/16	13/16	1 3/4	6-08-335
1 1/4"	1.250	1 3/4	1.95	2.09	1 1/8	13/16	1 15/16	6-10-335
1 1/2"	1.500	2	2.19	2.35	1 3/16	13/16	2	6-12-335
1 3/4"	1.750	2 1/4	2.50	2.66	1 3/8	1	2 3/8	6-14-335
2"	2.000	2 1/2	2.91	2.95	1 5/8	1	2 5/8	6-16-335
2 1/2"	2.500	3 1/4	3.66	3.66	1 7/8	1	2 7/8	6-20-335
3"	3.000	3 3/4	4.19	4.28	1 7/8	1	2 7/8	6-24-335

Standard Shoulder Bushings



Inside Diameter A		B		C1	E	F	L	SinterLube® Catalog Number
Nom.	Dec.		C					
1"	1.000	1 1/2	1.72	1.84	15/16	1 3/4	2 11/16	6-08-345
1 1/4"	1.250	1 3/4	1.95	2.09	1 1/8	2	3 1/8	6-10-345
1 1/2"	1.500	2	2.19	2.35	1 3/16	2	3 3/16	6-12-345
1 3/4"	1.750	2 1/4	2.50	2.66	1 3/8	2	3 3/8	6-14-345
2"	2.000	2 1/2	2.91	2.95	1 5/8	2	3 5/8	6-16-345
2 1/2"	2.500	3 1/4	3.66	3.66	1 7/8	2 1/2	4 3/8	6-20-345
3"	3.000	3 3/4	4.19	4.28	1 7/8	2 1/2	4 3/8	6-24-345

Extra Long Shoulder Bushings



Inside Diameter A		B		C1	E	F	L	SinterLube® Catalog Number
Nom.	Dec.		C					
1"	1.000	1 1/2	1.72	1.84	15/16	3	3 15/16	6-08-385
1 1/4"	1.250	1 3/4	1.95	2.09	1 1/8	3	4 1/8	6-10-385
1 1/2"	1.500	2	2.19	2.35	1 3/16	3	4 3/16	6-12-385
1 3/4"	1.750	2 1/4	2.50	2.66	1 3/8	3	4 3/8	6-14-385
2"	2.000	2 1/2	2.91	2.95	1 5/8	3	4 5/8	6-16-385
2 1/2"	2.500	3 1/4	3.66	3.66	1 7/8	3	4 7/8	6-20-385
3"	3.000	3 3/4	4.19	4.28	1 7/8	3	4 7/8	6-24-385

For clamp data, guide pin tap sizes and seating torques, please refer to the Ready Die Set and Guiding Catalog.