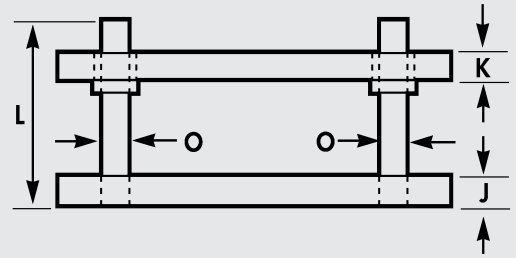
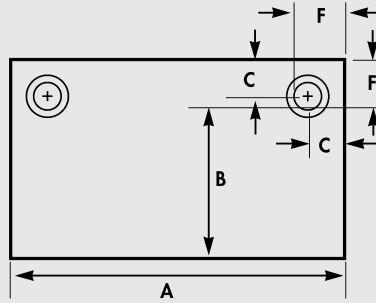
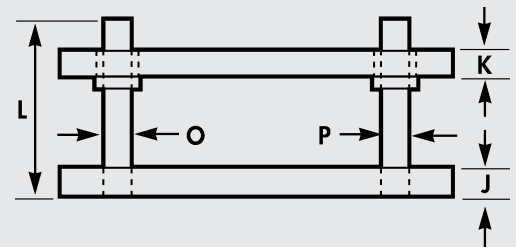
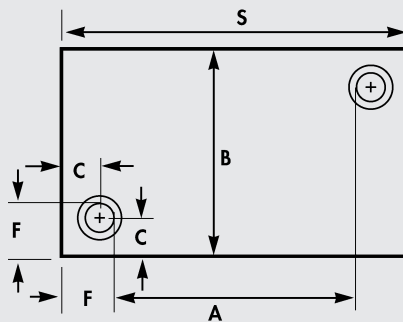
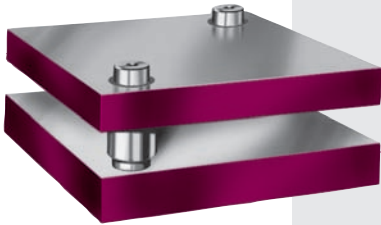


# Custom, Two Post All Steel Die Sets

Back Post - Type 2B

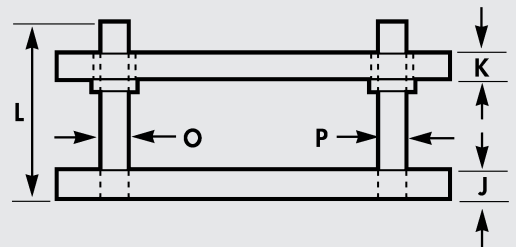
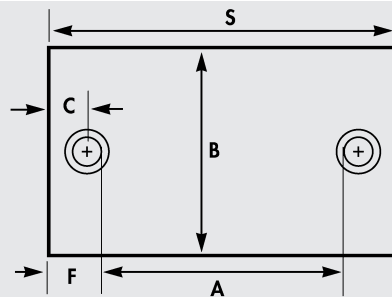


Diagonal Post - Type 2D



Can be made with posts on other diagonal, if specified.  
Center of die space is in the center of the die plates.

Center Post - Type 2C



Center of die space is in the center of the die plates.

When ordering custom, all steel die sets, specify:

1. Type 2B, 2D, or 2C. Note: O & P should be different diameters on Type 2D & 2C die sets.
2. Dimensions A, B, J, K, and L.
3. Type bushings - sintered bronze bushings supplied unless otherwise specified.
4. Diameter of threaded shank, if wanted. See page 9 for Threaded Shank Selection Chart.
5. How shipment should be made.
6. Custom die sets may not be returned for credit.
7. Quantity needed.

### Two Post Die Sets

Dimensions furnished when customer specifies only A and B dimensions. B dimension does not affect table.

Die Space L to R A	Post Diameter O	Post Diameter P	D.H. Thickness J	P.H. Thickness K	F for O Post	C for O Post	C for P Post	S
6" to 8"	1	--	1 1/4	1 1/4	2	1 1/2	--	--
9" to 12"	1 1/4	1	1 1/2	1 1/2	2 1/4	1 5/8	1 3/4	A + 4 1/2
13" to 16"	1 1/2	1 1/4	1 1/2	1 1/2	2 1/2	1 3/4	1 7/8	A + 5
17" to 22"	1 3/4	1 1/2	1 3/4	1 3/4	2 3/4	1 7/8	2	A + 5 1/2
23" to 28"	2	1 3/4	2	2	3	2	2 1/8	A + 6
29" to 40"	2	1 3/4	2 1/2	2 1/2	3	2	2 1/8	A + 6
41" to 65"	2 1/2	2	3	3	3 3/4	2 1/2	2 3/4	A + 7 1/2