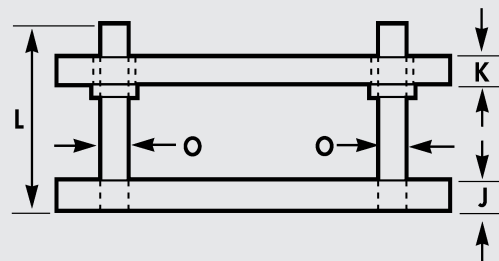
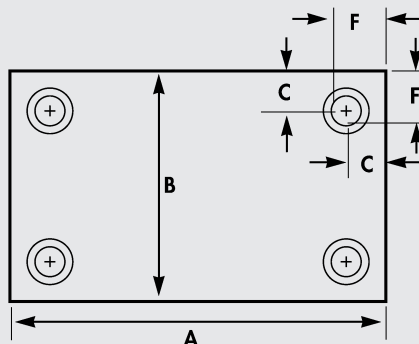
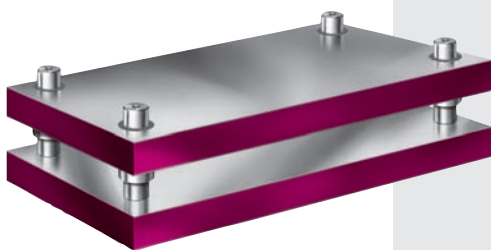


Custom, Four Post All Steel Die Sets

Four Post - Type 4P



Right front pin offset 1/8".

When ordering custom, all steel die sets, specify:

1. This table shows accepted design dimensions. Any or all of these dimensions, however, can be changed to conform to customer's specifications of A, B, O, P, J, K, L, F or W, etc.
2. All die sets are always made so that the punch holder can not be reversed on die holder. Type 4Ps are made with same diameter posts, but the right front post is offset 1/8" toward outside edge of die set.
3. Any of these sets are available both with or without shank. Unless otherwise specified, shank is always located in middle of both A and B dimensions. For safety reasons, we supply only threaded shanks. See page 9 for Threaded Shank Selection Chart.
4. Die sets of design other than shown in catalog can be furnished in steel or aluminum.
5. Custom die sets may not be returned for credit.
6. Sintered Bronze Bushings supplied unless otherwise specified.

Four Post Die Sets

Dimensions furnished when customer specifies only A and B dimensions.

Die Space L to R A	Post Diameter O	D.H. Thickness J	P.H. Thickness K
6" to 10"	1	1 1/4	1 1/4
11" to 16"	1 1/4	1 1/2	1 1/2
17" to 22"	1 1/2	1 3/4	1 3/4
23" to 28"	1 3/4	2	2
29" to 40"	2	2 1/2	2 1/2
41" to 65"	2 1/2	3	3

These dimensions apply to both two post and four post sets.

Nominal Guide Post Diameter	C	F
3/4"	1 1/4	1 5/8
1"	1 1/2	2
1 1/4"	1 5/8	2 1/4
1 1/2"	1 3/4	2 1/2
1 3/4"	1 7/8	2 3/4
2"	2	3
2 1/2"	2 1/2	3 3/4
3"	2 3/4	4 1/4

Let Us Quote Your Special Applications

- Aluminum die sets.
- Three and four platen die sets.
- Plate work, ground or unground.
- Stress relieved plates.
- Die sets can be made with heel blocks.
- Per print CNC machining, holes, keyways, cutouts and burnouts.