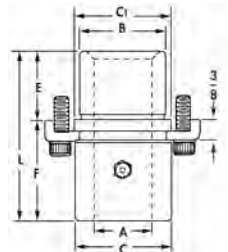


### Demountable Sintered Bronze Bushings (-235, -245, -285)

#### Short Shoulder Bushings



Inside Diameter A		B	C	C1	E	F	L	Sintered Bronze Catalog Number
Nom.	Dec.							
1"	1.000	1 1/2	1.72	1.84	15/16	13/16	1 3/4	6-08-235
1 1/4"	1.250	1 3/4	1.95	2.09	1 1/8	13/16	1 15/16	6-10-235
1 1/2"	1.500	2	2.19	2.35	1 3/16	13/16	2	6-12-235
1 3/4"	1.750	2 1/4	2.50	2.66	1 3/8	1	2 3/8	6-14-235
2"	2.000	2 1/2	2.91	2.95	1 5/8	1	2 5/8	6-16-235
2 1/2"	2.500	3 1/4	3.66	3.66	1 7/8	1	2 7/8	6-20-235
3"	3.000	3 3/4	4.19	4.28	1 7/8	1	2 7/8	6-24-235



#### Standard Shoulder Bushings



Inside Diameter A		B	C	C1	E	F	L	Sintered Bronze Catalog Number
Nom.	Dec.							
1"	1.000	1 1/2	1.72	1.84	15/16	1 3/4	2 11/16	6-08-245
1 1/4"	1.250	1 3/4	1.95	2.09	1 1/8	2	3 1/8	6-10-245
1 1/2"	1.500	2	2.19	2.35	1 3/16	2	3 3/16	6-12-245
1 3/4"	1.750	2 1/4	2.50	2.66	1 3/8	2	3 3/8	6-14-245
2"	2.000	2 1/2	2.91	2.95	1 5/8	2	3 5/8	6-16-245
2 1/2"	2.500	3 1/4	3.66	3.66	1 7/8	2 1/2	4 3/8	6-20-245
3"	3.000	3 3/4	4.19	4.28	1 7/8	2 1/2	4 3/8	6-24-245

#### Extra Long Shoulder Bushings



Inside Diameter A		B	C	C1	E	F	L	Sintered Bronze Catalog Number
Nom.	Dec.							
1"	1.000	1 1/2	1.72	1.84	15/16	3	3 15/16	6-08-285
1 1/4"	1.250	1 3/4	1.95	2.09	1 1/8	3	4 1/8	6-10-285
1 1/2"	1.500	2	2.19	2.35	1 3/16	3	4 3/16	6-12-285
1 3/4"	1.750	2 1/4	2.50	2.66	1 3/8	3	4 3/8	6-14-285
2"	2.000	2 1/2	2.91	2.95	1 5/8	3	4 5/8	6-16-285
2 1/2"	2.500	3 1/4	3.66	3.66	1 7/8	3	4 7/8	6-20-285
3"	3.000	3 3/4	4.19	4.28	1 7/8	3	4 7/8	6-24-285

### Demountable Steel Bushings (-645)

#### Standard Shoulder Bushings



Inside Diameter A		B	C	C1	E	F	L	Steel Catalog Number
Nom.	Dec.							
3/4"	.750	1 1/8	1.17	1.30	11/16	13/4	2 7/16	6-06-645
1"	1.000	1 1/2	1.72	1.85	15/16	13/4	2 11/16	6-08-645
1 1/4"	1.250	1 3/4	1.99	2.09	1 1/8	2	3 1/8	6-10-645
1 1/2"	1.500	2	2.19	2.35	1 3/16	2	3 3/16	6-12-645
1 3/4"	1.750	2 1/4	2.50	2.66	1 3/8	2	3 3/8	6-14-645
2"	2.000	2 1/2	2.91	3.06	1 5/8	2	3 5/8	6-16-645

Note: The Demountable Clamp Data is located on page 9.